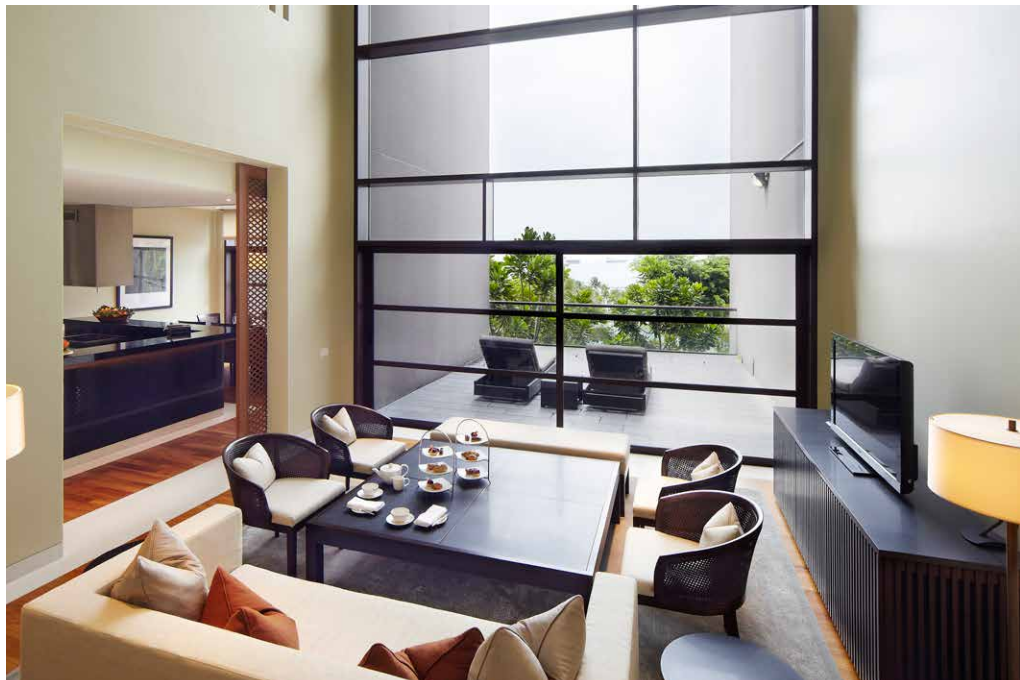
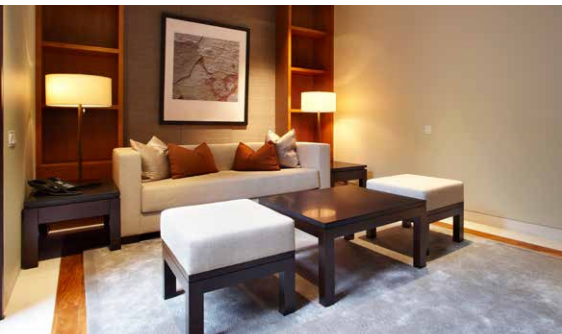



  
**CAPELLA**
  
 THE CLUB RESIDENCES
   
 SINGAPORE



## ROOM TYPE: PENTHOUSE

- **Double-storey**

- **Size**

Three-Bedroom with en-suited bathrooms and one helper's room: 296 sqm (3186 sqft)

- **Dining**

- Complimentary continental breakfast in the Club Lounge  
(Weekdays, excluding Public Holidays)

- **Transportation**

- Complimentary shuttle bus services to VivoCity Shopping Centre and \*Central Business District  
- Complimentary Parking

- **Clubhouse Entertainment**

- Pool Table, Table Tennis, Xbox 360, board and card games

- **Clubhouse Facilities**

- Fitness Centre (24-hour), Playground, Multi-purpose Function Room, Tennis Court, Swimming Pool

- **Other Facilities and Services**

- **Complimentary**

- 24-hour security  
- 24-hour front desk service

- Wi-Fi access

- Housekeeping service (Monday to Saturday)

- Resort activities

- **Chargeable**

- 24-hour in-room dining

- Laundry and dry cleaning

- Private party planning service

- Limousine service

- Preferential tee times and rates at Sentosa Golf Club

- **Location:**

- **Major Expressways**

- Central Expressway (CTE)

- Ayer Rajah Expressway (AYE)

- **MRT**

- NE1/CC29 Harbourfront MRT Station 3.4 km

- **Central Business District**

- Shenton Way 6.3 km

- Raffles Place 7.2 km

- **Singapore Changi Airport**

- 25 km